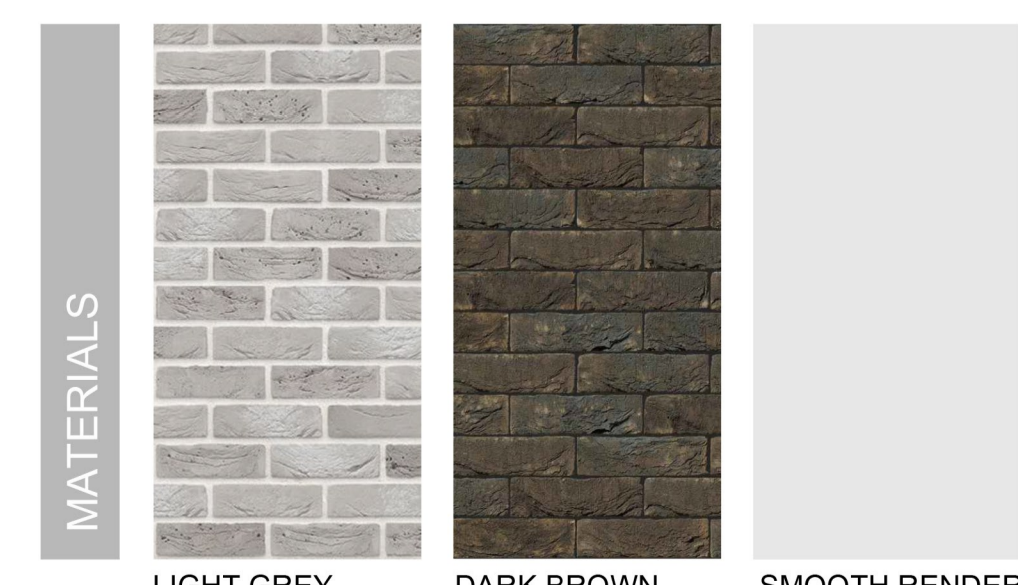
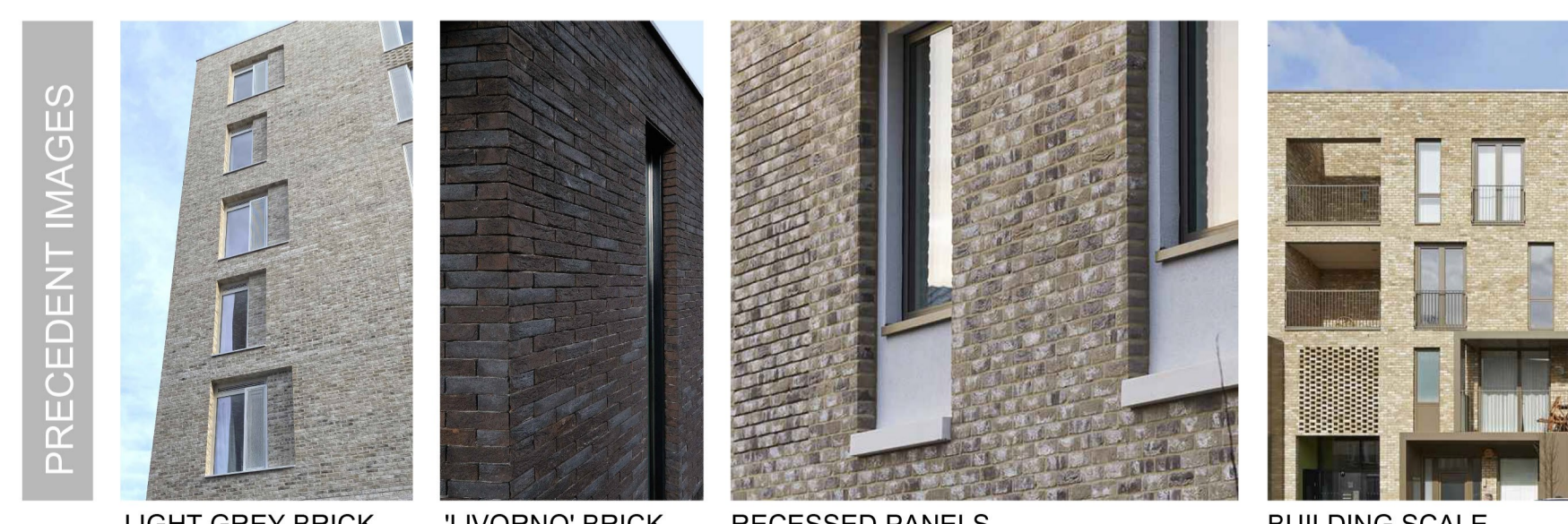
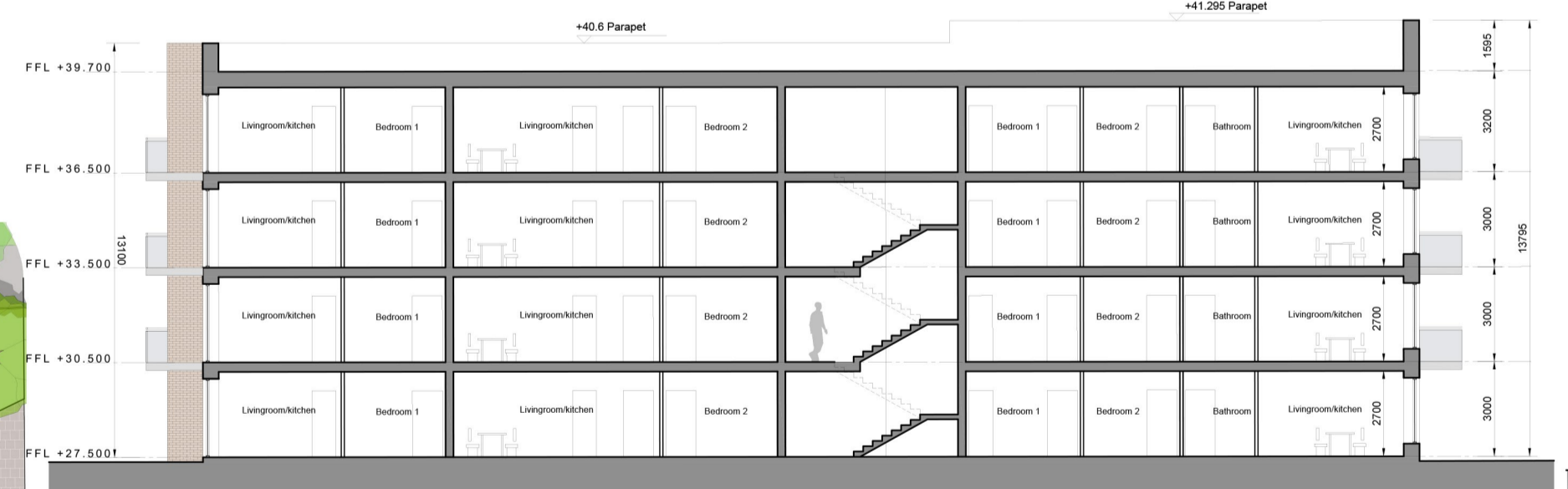
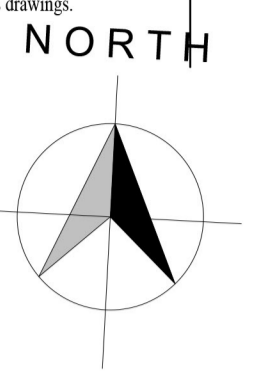


Vauderville Court, London  
Levitt Bernstein



- © This drawing is copyright.
- 1 Do not scale this drawing.
- 2 Errors and omissions to be immediately notified to Architect.
- 3 All dimensions to be checked on site.
- 4 To be read with relevant Engineers drawings.



**Breakdown of Units**

Apartment type	No.	% by beds
1 bed/ studio	0	0.00%
1 bed	8	34.8%
2 bed/ 3 person	0	0.00%
2 bed/ 4 person	15	65.2%
3 bed/ 5 person	0	0.00%
<b>Total</b>	<b>23</b>	<b>100.0%</b>

<b>Dual Aspect Ratio:</b>	87.00%
<b>Gross Internal Floor Area:</b>	2208m <sup>2</sup>
<b>Net Commercial Area:</b>	0m <sup>2</sup>

Notes:  
All dimensions in millimetres  
External Finishes:  
Roof:  
Selected flat roof with parapets to walls.  
Sedum finish.  
Walls:  
Selected facing brick, seamed metal to front entrance surround, power coated aluminium or similar louvres to bin/bike stores

Windows:  
powder coated aluminium/Upvc or similar with louvres or panels where shown  
Gutters/downpipes:  
Internal outlets  
Balconies:  
Powder coated steel & glass or similar

Doors:  
Powder coated aluminium or similar door with fanlight and/or sidelight

revisions	date	ins
description	2008 PA1 A 01	2008 PA1 A 01
Block A		
FLOOR PLANS, SECTION & ELEVATIONS		

job  
**SHD DEVELOPMENT, BELCAMP, MALAHIDE ROAD, DUBLIN 17.**

scale  
1:200 A1

date  
APRIL 22

drawn  
AOL

checked  
COS

client  
**Gerard Gannon Properties**

issue  
**SHD PLANNING APPLICATION**

**CONROY CROWE KELLY ARCHITECTS & URBAN DESIGNERS**

65 MERRION SQUARE  
DUBLIN 2  
phone 01 6613990 fax 01 6765715  
email info@cck.ie